

DEVOTED SOLELY TO

AMATEUR RADIO

 EDITED AND PUBLISHED BY: BILL MCNATT, W9NFK, FRANKLIN PARK, ILLINOIS

(Copyrighted 1949 by William E. McNatt, Jr.)

- * W0BIP, ELLIOT, IOWA, CONTACTED W3CUM, BUTLER, PA., FOR 800-MILE DX RECORD!
- * JULY 10, 11, 12, 22 AND 23D OPENINGS ON TWO SET NEW HIGH FOR DX AND ACTIVITY!
- * THE MIDWEST VHF CLUB 2ND ANNUAL PICNIC WAS ATTENDED BY HAMS FROM 7 STATES!
- * "THE STATION OF THE MONTH" PRESENTS W3RUE, TED FABIAN, PITTSBURGH, PENN.
- * W0ZJB, W0MNQ, MISSOURI, WORKED INTO ILLINOIS, WISCONSIN, OHIO, JULY 10.
- * W3WJC AND W8UKS WORKED WLHDQ, WLPV FOR FIRST OHIO TO MASS., CONN. DX.

TWO METERS, LAST MONTH . . .

Busy, busy, busy!!!! Gad, what a month on 2-meters, let alone 230 and 6 meters! Just to top things off, we have had an unusual vocational program (that's polite for "an awful time at the plant") which has kept us away from all the inner-doings on the Two Meter band. However, our faithful reporters have done a wonderful job of coverage, as you will read in the following pages.

W3CUM, "Cookie", Butler, Penna., and W0BIP, Dwight, Elliot, Iowa, hooked up on the a.m. of July 23, for a new DX record of about 800 miles on Two! The record was broken, earlier in the night, by W8UKS, W3WJC and W3QKI, but it would up, at last, between W0BIP and W3CUM, even though a VE3 and a W2 were hearing W0BIP. This was quite an upset of contacts on July 10 and 11, when W0MNQ and W0ZJB, near Kansas City, were worked by W9s, W8s and heard by eastern W8s! Jim and Vince, and W0RNC, missed out on the record by only a few miles! Those incredible DXers, W3WJC and W8UKS, invaded the vertical sanctity of Connecticut, Massachusetts and New York, working, collectively WLHDQ, W1MNF, WLPV, W2BAV, but on horizontal! "Down East" will never be the same, on vertical!

W3GKP worked W9UCH, Ft. Wayne, and W9TKL, Waukegan, making both very happy. Smitty also heard W8RWW, Detroit, on July 11, but got no answer.

W4AO, 146.1, phone called W9TKL for 2 hours on July 10. According to W3GKP, W4AO was the only Virginia station calling W9s!

W3RUE, on July 10, worked W9DXX, EHG, GLY and W4JDI; heard W9PZS, JMS, TKL, WWH, UCH and HXS. On the night of July 11-12, Ted worked W2BAV and WLHDQ, state #13, W2PAU and W4BCT. Heard: W1MNF, W2EH, OOC, W9PM, ZEB and EHG. On July 23, Ted nearly went through the ceiling when W0BIP came in Q5 S4 and built up to S6. By the time W0BIP had worked through the W9s, W8s and into western W3s, including W3CUM, conditions had shifted and he was out. Later, W0EMS and W3RUE had a partial contact. Other contacts at W3RUE were W9TKL, CUP, EGH, PK, YFT, GJE, W2UTH, UXP, OXP, JLW, PLU and BAV. Heard: W9UCH, HKO, HBU, CGR, JML, JFK, UJM, W4GLY, FJ, W9PXX, July 23-24.

W4HHK's schedule with W9JMS paid off on July 21 when the first contact was made. Paul says, "Please emphasize the use of c.w.! Many a night I can hear weakphone signals I cannot identify, but could copy solid on c.w.!" On July 11, W4HHK worked W9FVJ, W0EJL and W9UED, Carbondale, Ill.

W0MNQ reports that the Iowa-Missouri path was really open, July 21. On the night of July 20, W0ZJB and W5DFU made the first Missouri-Oklahoma 2-meter contact. FB, W0MNQ corrects us on the first Kansas-Illinois contact.

(Continued on Page 3.)

ATTENTION MOBILE HAMS

COMPLETE MOBILE PACKAGE - NOTHING ELSE TO BUY. OUTSTANDING MOBILE SIGNALS USE MOTOROLA EQUIPMENT - BACKED BY YEARS OF COMMUNICATION EQUIPMENT EXPERIENCE - WORLD'S LARGEST PRODUCER OF 2-WAY MOBILE EQUIPMENT.

TWO-METER SUPER-SPECIAL! Four, only, $\frac{1}{4}$ -KW. power amplifiers, less 4-125A tubes, used by police, cabs, phone company. Only. . . \$50.00

72Mc. Transmitter, less power supply, but with all tubes; 815 final; converted easily to Six Meters. Instruction manual and original circuit supplied. Limited quantity. \$35.00

Power supplies for above: a.c., \$12.00; 6 v.d.c., \$10.00

A mobile transmitter with a double feature FM or AM at flip of the switch, the MOTOROLA FMT-30-DMS 27-30 MC. \$130.00

P-7253 spring base rear-mount antenna. \$22.50

MOTOROLA P-69-13-ARS receiver with special noise limiter for use with any converter having 1500-3000 KC \$60.00

3-30 famous Gon-set converter complete to connect to the P-69-13-ARS receiver \$39.95

P-327-E Fire-wall loud speaker \$5.00

The above comes complete with all necessary accessories and mounting hardware. Order direct or through the Motorola National Service Organization member in your area.

WATCH "THE VHF NEWS"

FOR MORE EQUIPMENT AND PARTS TO BE OFFERED FOR SALE IN
THE NEXT ISSUE

Write or Phone

HARRY HARRISON
W9LLX
MOTOROLA INC.

1327 W. Washington Blvd. Phone: TAYlor 9-2200, Ext. 161, Chicago, Ill.

TWO METERS, LAST MONTH (Cont'd) . .
 W0DVV, Merriam, Kansas, worked W9MBD
 in 1948, for the first Kansas-Illinois
 two-meter contact.

W5JTI and W9NFK have been exchanging
 messages with WLHDQ, who reports that
 NFK's Nr. 1 took 10 days, but came
 through on 2, all the way, via
 W9BBU UCH W8AMW UKS W3RUE GKP W2EH
 to WLHDQ. W5JTI's #1 made it in 2
 days, a record, Ed thinks, via W5JTI
 W4HHK FWH FI FBJ/4 W8CYE W3RUE GKP
 OWW W2EH WLHDQ. W3GKP - W3KBA - WLHDQ
 took 2 days.

Ed, WLHDQ, says July 11 was a big
 night for him, working W8WJC and W8
 UKS for his first Ohio and W8 and a
 total of 13 states. He worked W8UKS
 on both vertical and horizontal.

Our "Scoreboard" is still under re-
 vision, but you will notice in the
 various reports the latest standings
 of many stations. W8WJC now has 17
 states, 7 call areas and VE3. It is
 rumored that W8UKS is now up to 18,
 but we do not know. What say, Sam?
 W8BFQ has 14 states, 6 call areas
 and VE3. W2NLY is up to 13, 5 and
 VE1. On July 11, Jim worked W8UKS,
 heard W8SR, W8SHI and W9FM, who was
 called 3 times, but no answer!! Jim
 is maintaining his schedules to the
 west, and expects better results
 with his new Wellman pre-amp, using
 W3GKP's version with 2C51s.

W9JMS, Cory, Ind., says that, on
 the night when W0BIP and W3CUM made
 the new record, W0BIP was 20 db over
 S9, but W3CUM was an S3. Howard's
 location is south of the $\frac{1}{2}$ -way mark.
 The weather was unusual: there was
 an electrical storm to the north, but
 what was the weather in northern In-
 diana, in the path? On the next night
 Howard reports the boys with low an-
 tennas were hearing the W3s, but the
 fellows with high antennas were not
 hearing much at all.

W9NW finally got out to the east on
 July 10 and worked W8BFQ for 6 states,
 3 call areas. Other recent DX was W0
 WGZ, W9HWX, Neenah, Wisc., W9FVJ. NW
 and GDM recently enjoyed visiting the
 northern Indiana gang: RHL DLI EEO
 HDB CAW and NHA, who wasn't home. A
 nice visit was also had with W9MGP,
 Maple Park, some time ago.

W9CZR has moved to Lombard, Ill., and
 will have much better antenna spot.

W9WFC is off the air until he has no
 landlord to worry about. Does anyone
 know of a good home for sale, Chicago,
 or suburbs?

W9CGR, W9DRN, W9GLY and W9QIN are the
 mainstays of the band, now along with
 W9NW, who always seems to be around.

W6ZUX reports that the Two Meters and
 Down Club picnic was a tremendous suc-
 cess, with about 200 people attending.
 Warren is now on 6 meters, and expects
 to have a 16-element beam up soon!

Last minute dope: W5JTI broke through
 on August 1st and worked W9FVJ, JMS,
 SUV ZHL HNL CBU and W8CYE. Also, LLA.
 Tim worked Indiana, Illinois, Ohio and
 Kentucky, but says, "Here's the rub!
 Many more contacts would have been
 made if c.w. had been used!" Wonder
 how long the DX fellows will have to
 pound this home before it "takes"?
 Tim now has 8 states, 5 call areas,
 and about 660 miles, to W9NFM.

W9FKI says nothing too extra special
 to report, other than confirming W5
 JTI's invasion of southern Illinois.

The Midwest VHF Club Picnic turned
 out to be just about all the boys
 could handle! Such a busy day! Space
 doesn't permit listing all 2-meter
 hams present, but many well-known
 fellows there were: W8WSE (Belt DX)
 W0WGZ, W0HAQ, W9s ALU ZHB JIL TKL
 BBU DRN CGR WWH HIF QKM NJT PK BDW
 RHL AQQ LLA ASM EGH UCH CQH CAW HKQ
 W8VIB W8RLJ W8WUU W8YGY from
 a gang of 250 hams, about 300 to 350
 persons attending. W9EDW's entire
 family - 6 - was there! The Indianap-
 olis gang brought their XYLs; sever-
 al fellows wished they had, also.

The Six Meter representatives were
 W9NJT ZHB ALU CSZ PK QKM W0HAQ W9BHH
 W9WFC AQQ JIL OEW and ???

Old-Timers, based on years licensed
 were: W9HPG FVD NW IJD CX and CSZ;
 W9CX and W9CSZ tied at 1911!

Ero Erickson, W9HPU, secretary of
 the Chicagoland Mobile Radio Club,
 and many of the members were there.

Stations were set up for and oper-
 ated on 10, 6 and 2, but most of the
 6 and 2 meter fellows were there!

Sorry, we just don't have enough
 space for more news, this month!!

THE JULY 10TH OPENING, AS HEARD IN THE KANSAS CITY AREA.

By: Jim Switzer, WØMNQ

Yes, the evening of July 10th will be remembered, here, for a long time! It had been forecast, here, that the band should be pretty good, that night. WØDVV, Merriam, Kans., WØRNC, St. Joseph, Mo., and myself had compared notes, and signed with each other to look around. At 2130, it appeared that nothing was going to happen, so I turned off the rig and went upstairs; later, I learned that Jim, WØRNC, quit about the same time and went out. At about 2215, WØZJB, Vince Dawson, called me and said W8s were coming in on 2! We made a bee-line for the basement, and the first signal heard was W8WSE, Garfield Hts., Ohio! There was considerable QSB, but we could read about 50%. Next heard was W9ZHB working WØBIP, and we waited for him; no answer on our first call, so we CQ'd to the northeast. There was W9WFF, a steady S7, calling us from Frankfort, Ill., just south of Chicago! By then, it was getting close to our time to go to work, since we were on the midnight to 8AM shift. After signing with WFF, we heard Alice, W9DXX, Homewood, Ill., S-9 calling us! Her signal was very steady, and louder than some of the local stations. We signed at 2300 with Alice, and regretfully pulled switches. It was really tough! We learned, next day, that W8WSE was hearing us S5 to 6 when we signed with Alice, but since Mike heard us say we had to go to work, he didn't call! A good 700 miles on 2, and I had to work! (Not only that, but W8 WJC and W8UKS were after you, as were several Illinois stations, W9 NFK included, in spite of a 4-element indoor antenna! - Editor).

All this time, Vince, WØZJB was grinding his teeth and sweating because he couldn't get the 2-meter rig working! Finally, he got on after midnight and worked into Illinois and Wisconsin before the band folded. Later, he found out that W8 WJC had called him. I guess it just wasn't meant for a record to have been made from out here, then. It

would have been about 730 miles from WØZJB to W8WJC!

WØRNC got home at about 0030 and got the message Vince had left for him. Staying on the band, then, until about 0300, Jim worked the best DX of any of us: W8CYE at about 570 miles.

WØDVV, Ned, was around during this time and, after working WØHQA, Des Moines, he was suddenly surprised to hear W9s. Ned worked W9ZHB, DXX and - I believe - W9WFF.

Nothing was heard on Monday night, July 11, due to a front being across this area and the air being disturbed by thunderstorms. However, conditions still looked favorable for the Ohio, Indiana and Illinois area. On Wednesday night, we found out from WØNFM that the band had been open, there, to the east on Monday.

Dwight, WØBIP, pulled the switches and went to bed after working W9ZHB, so never knew the band was really open, since it is not unusual for him to work W9ZHB from his location at Elliot, Iowa. None of the rest of the Kansas City gang was on, WØDIX having gone to work at 2100, as usual. DDX, by the way, is now up to 39 states and 4 VE districts on 6.

Now, to describe propagation conditions on the night of July 10th. The opening was very definitely tropospheric bending, with the Kansas area actually outside the super-refractive area on its western side. This was true of the Washington area, only on the eastern side, so the same setup existed between W9TKL and the W3s as it did between the WØs to W8s and W9s. A rather weak, high-pressure area existed, with the cold front, on the leading edge, lying northeast-southwest thru Ohio on the 1830 map. On the 0300 map, the front had moved east, thru Virginia and right up the New Jersey coast. Data indicated a super-refractive layer for Illinois, Indiana, Ohio and the western part of Pennsylvania. Pittsburgh did not report, so no conclusions could be made. Nashville, Tenn., indicated normal conditions, all the way thru that area, so stations, there, were too far away to put
(Continued on next page)

THE JULY 10TH OPENING .. W0MNQ (Cont.) direct signals into it, so it didn't benefit the Tennessee boys. At least, I have had no reports of stations who worked out. Also, as far as I know, W0DSR, Greenleaf, Kans., and W0JFE at Abilene, Kans., were not heard, so the Kansas City area must have been at the western limit of the opening.

The super-refractive layer in the Chicago area was rather close to the surface, at about 2000 ft., while, at Toledo, O., it was nearer 5000 ft.

(Ed. Note: Jim included curves of the M gradient for the various areas covered by the opening; we regret that space doesn't permit publishing them at this time. When space is available, we'll run them. - Editor.)

* * *

W8EP REPORTS FROM TERRA ALTA, W. VA.

On July 10th, we were trying to get W8EHA and JKN in contact when I heard W9TKL, S8-9! I told the boys the band was wide open, and to get busy! SEHA worked W9TKL with a 522; EHA is down on the river, surrounded by hills. W8 JKN called and listened for TKL until the band went out. W8TDJ was on vacation. W8JM's beam is still attic bound. W8EP worked W9WWE and W9PM, for state #9. Then W9FVJ, W4FEJ/4, W9CEW. Called W9GLY, JIL, GJQ and W4DGN for about an hour. On July 11, worked W8ZUR W9FVJ W8MGA W4FEJ W8WRN and did not hear anyone after 0915. That night, I heard the Pittsburgh section working east, but couldn't raise anyone. I call CQ on c.w. at 2200, beamed on Norfolk and Virginia, every night. So far, W4CLY is the only one I have heard or worked, and the contact was not 100%.

On the 14th, heard W8CYE, Q5, but couldn't raise him! But, the season is still young, and I am on every night and also do a little listening in the mornings, now.

My QSL card stock is very low; I am trying to locate a new source of supply, so - you fellows - please be patient if you haven't received my card, yet. We'll have more, soon!

W8JKN and I are going to try 420, this fall, with converted 645A's. We are about 55 miles apart, with rough country between us.

W0EMS REPORTS THE JULY 22 OPENING

The two-meter band opening on the night of July 22-23 was a thrill to me, as I have been on the band for only a few weeks, and had never had a QSO out of Iowa. Then, all in one night, to work Illinois, Indiana, Ohio, Michigan, Pennsylvania and Iowa, is about all one could expect! That was really an unusual opening, I guess, since it lasted from early evening until about 3AM on the 23rd.

I learned my lesson on one thing: have the rig equipped for c.w. If I had done so, before this opening, I could have worked W3RUE and W3NKM, for sure. I did work W3RUE, in that we were in contact and exchanged reports, but he wasn't too sure that it was he that I was working, hi! But, W3QKI was sure!

Another thrill came along, that night, also, when I heard W8WJC calling me. I had heard him, just recently, and had written to him to notify him of the fact, but hardly expected to ever work him! Then, that night, he answered 3 of my CQs! He told me that the W3s were on, and, after our last QSO, around 1:25AM, both W3RUE and W3NKM started calling me. What a thrill! My wife tells me that she came down stairs for a drink of water and heard me, rather incoherent, yelling into the mike trying to make up for the lack of modulation which was low because of r.f. feedback! Finally, I reached up and cut the B plus lead from the rig, grabbed the key from the 20 meter rig and went on c.w. But, by that time, Pittsburgh had gone out. I tried a CQ, however, and was easily pacified to hear W3 QKI calling me, hi!

The rig, here, is a 522, through-out, converted by W0BEB, who is also active on 2. Be on the lookout for both of us. We have identical rigs and 4-element beams; expect to have 16-element beams, soon. I am going after that record, and if I can find a night when W0BIP is not on, look out! W0BEB, BIP and myself are in a NE-SW line; I'm about 10 miles east of BEB, and about 40 miles east of W0BIP. The elevation of Adair is about 1450 feet, and we expect to work some DX!

W5DFU REPORTS FROM TULSA, OKLAHOMA.

The jackpot was hit on two meters, here, on Friday, July 15, 1949. W5 DFU at last contacted W5NLZ, Oklahoma City, at 0650, after months of trying. This was the first Oklahoma City-Tulsa contact on 2 meters. Russ finally put up a horizontal beam, and that did it! Never did we have any luck on vertical.

This contact was the direct result of much effort and help on the part of W5LGW, Drumright, who kept plugging at W5NLZ to keep 2 meter interest going, and in getting him to try horizontal. Needless, to say, all further 2-meter work from Oklahoma City will be on horizontal. Ben and I are doing a lot of "missionary" work on horizontal, in these parts.

On Sunday, July 17, Vince Dawson, W0ZJB, called me, long-distance, to say I was being heard in his area, very well. So, we set up a schedule, and an hour later, at 2250, we established contact on c.w. This was the first Oklahoma-Missouri 2 meter contact and, to my best knowledge, the top DX record reported from Oklahoma to date. The Tulsa-Gashland distance is 230 miles, approximately. I was certainly sold, then and there, on the advantages of c.w. for 2 meter DX, as contact on phone was impossible! We tried it.

After the band folded, I called Vince, landline. After mutual congratulations, we set up a nightly schedule, at 2130, CST. W0ZJB calls on 144.6, the first 3 minutes; I call him for 3 minutes on 144.45 Mc. I also call CQ at 0655, Monday through Friday, with the beam at 20°, bearing to Kansas City area. This is on c.w., at 144.45 Mc. Fellas, have a look, down this way!

The W0ZJB contact made well worthwhile all the labor put into the 48 element beam at W5DFU and also made the 15 watts input really work.

"Silent Willie" - Bill Bonnell, W5 CVW - was given a talk, landline, recently! He has been working some FB DX on Two, but he must have broken that "VHF News" reporting pen of his! (Guess not, since Bill reports in this issue, again. FB! - Editor.)

THE "BAREFOOT QUEEN" REPORTS . . .

By: Margaret Roberts, W8BFQ

"For cryin' out loud, listen to those guys roll in! So, that's what a real band opening is like!" That's what I said, Sunday, July 10, when Jerry came in for supper at 9PM and told me he had just worked W9HXS in downtown Chicago, S9 plus both ways. "Why don't you work the band, tonight?", he invited. I didn't even wait to eat - at 9:05, I was in the shack and bearing down. Worked W9s NFK NW GUA CT GJE WWH ZHB JIL GDM EVJ EHX DKX JAF GSY W4JDN FBJ/4 W3AIR W0BJL.

Heard, called but not raised: W0GLY W0MNQ and W0ZJB. Went to bed at 3:30 AM. The most disgusting thing I ever heard as W0MNQ saying he was "pulling switches and going to bed!" (See W0MNQ's report of the big night. - Ed.) He was coming in here S9!

Monday, July 11, after a few hours of rest - too much excitement to sleep - I worked W4FBJ/4 again, at 9:20. That night, hooked W0NFM and W0BZE. But, the OM was home, so W8WJC worked W1HDQ, PIV, W0GLY and W9ZHB, and morning arrived, again. Between contacts, heard W9TKL working W3AIR and W3GKP. W8UKS - The Old Goat - beat W8WJC to both W1HDQ and W1PIV! W8WSE worked about everybody, and so many others that it's all a confused jumble! W2PEN, Runnemed, N.J., had been worked on July 8, so the band opening brought my score to 14 states, 6 call areas and VE3. Happy Day!

W8UKS added Missouri and "cemented down" - he says - Massachusetts for 16. W8WJC's W1-land contacts brought him up to 17 states, 7 call areas and VE3.

W4BCT, who has been very consistent here for a month, missed the opening and is still fuming! He is now bearing down on the midwest states with blood in his eye, and wants schedules with interested stations. He is on 144.108 Mc. at Reliance, Va.

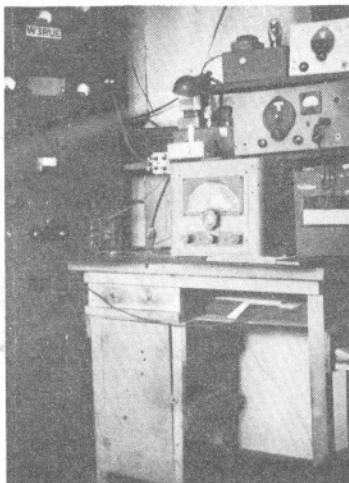
* * *
SECOND ANNUAL QSO PARTY, MIDWEST VHF CLUB. On Saturday, October 1 from 1200 CDST until 0300, October 2nd, The Second Annual QSO Party will be held by the Midwest VHF Club. More information in September issue.

THE STATION OF THE MONTH

By: Jack Woodruff, W9PK

The VHF News presents W3RUE, a v.h.f. station that has been active since 1935. Ted Fabian, Pittsburgh, Pa., needs very little introduction to either the 2 or 6 meter gang. He worked 5 meters from 1935 to 1941, and 2½ from 1940 to December 7, 1941. Shortly after that date, Ted - like thousands of other amateurs - received the famous "greetings" from Uncle Sam, and it wasn't W8UKS! Landing in the signal corps, Ted was sent to the interior of China, where he served with the Chinese Combat Command at Kunming, acting as liaison, handling radio communications between the U.S. Army and the Chinese Army. When 2½ meters was re-opened in November, 1945, Ted was on occupation duty in Shanghai. He returned to the states in April, 1946, and has been active on two and six meters, ever since.

The transmitter at W3RUE is completely homemade, built into a 6-foot relay rack. It is a combination job for operation of 6 and 2 meters. The top section consists of a 41 osc., 6L6 tripler, 2E26 doubler, 829B trip-



W3RUE, PITTSBURGH, PENNSYLVANIA.

ler, and 829B final. It runs 100 w. input on 2. The second section is a T21 osc., 6L6 and RK 4D32, with 100 watts input on Six meters. The two r.f. sections use the same modulator and power supplies, which are switched from one unit to the other with a ten-pole double-throw switch! Ted can change bands in six seconds! A variable crystal oscillator is used in both sections, with 5 crystals for Six meters, and 9 crystals for Two meters.

The receiver at W3RUE is a 6J6 pre-amp into a VHF-152A. For antennas, Ted uses a 3-element array on Six, but two antennas are used on Two. The horizontal consists of two 6-element beams 42 ft. high. The vertical is a 4-element array 45 ft. high.

As of July 15th, W3RUE has 34 states, WACA, VE1,2, G2,5,6 on Six Meters, and 13 states, 6 call areas, and VE3 on Two Meters. On Two, W3RUE has worked six stations over the 500-mile mark, 51 W8s, 9 W4s, 20 W2s, 22 W9s, 1 W1, and many W3s to total 264 stations on 2 meters. Had conditions held for a few more minutes on the night of July 22, Ted would have caught W0BIP, who was rolling in Q5 S4 when he was working the 8s! Ted's in the radio and TV business.



TED FABIAN, W3RUE.

A TRIP THAT PAID OFF . . .

By: Blackie and Irene, W9BEU

When vacation time comes along, a v.h.f. man thinks of visiting well-known stations, with just a little fishing thrown in. This is exactly what the W9BEUs did, thereby missing out on the first whopper of an opening we've heard of this year. So ended the first week of our vacation on July 16. Guess everyone knows the thrills of that first opening!

We decided to visit a few of the eastern stations, the next week, so we accepted an invitation to visit W8WJC and W8EFQ, Jerry and Margaret, of Everett, O., a 402-mile drive, or 11 hours from Carpentersville, Ill. The roads were perfect. Of great interest were the many TV antennas, of all kinds, whose direction changed and outlined the circle of coverage around each local TV transmitting antenna. Most of the TV receiving beams would put to shame the arrays of the v.h.f. gang!

It seems that the men who are most prominent, with good signals, are the most modest in telling the gang what makes their signal stand out! (How right you are! - Editor.) It surely isn't because of the high-power on 2 meters, as we used to think, altho' it helps a little to have enough r.f. in the feedline to burn a fellow's fingers if he becomes careless!

There are a great many "good locations" for v.h.f. work, if the boys would - and could - just take advantage of them. The elevation at W8WJC is very good, 1320 ft.; he also has a well-engineered antenna that is up in the air at least 100 feet. The well known "bed-spring" type of beam is used - 4 stacks up and 4 across - giving a gain of about 16-18 db. What a lot of gathering power that antenna has! Jerry works 200 to 400 miles, nightly, with ease and no puny signals on the receiving end. His reports are well-tempered, and an S4 signal is readable any place in his spacious shack which, by the way, is a building separated from the house.

In it are easy-chairs, a davenport, and the usual accumulation of radio gear which only a true ham has the

ability to acquire and to save for that "sometime" when he might need it!

Margaret, W8EFQ, has her own transmitter on 10 meters. In the short time she has had her license, she has worked over 100 countries, giving her a DXCC certificate. (You should try her strawberry jam, folks, it's out of this world!! - Irene)

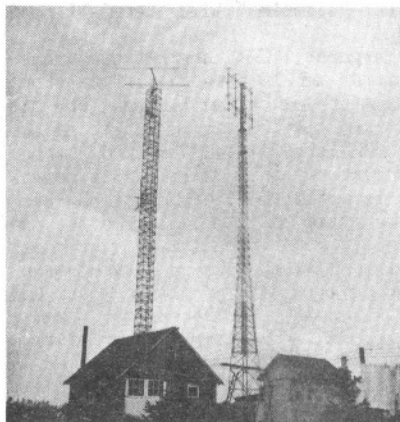
Jerry not only has tools, lathes and drills with which to make v.h.f. equipment, he also has plenty of measuring equipment for his hobby and livelihood. The transmitter uses a v.f.o. with the usual number of multipliers, ending up on 144 with an HK 54 driving a pair of HK 54s which drive a pair of VT-127As to 600 watts.

We cannot give full justice, in our description, to the gear at W8WJC-W8EFQ, their enthusiasm and pleasure they share in this hobby, and the many contacts they have made on 2 and 10.

Of course, we just had to visit W8UKS, Sam Harris, Burton, O., who is the main competitor of W8WJC for the States-Worked-On-Two crown. Sam is located just 30 miles west of W8WJC, and the rivalry between the two stations, altho' keen, is completely friendly even when both are gunning for a new state. W8UKS, the man of many names - "The Beard"; "The Old Goat", and "Yu-Kus" - has also had several QTHs poor for v.h.f. However, he now is situated in a location that we all dream about. After a great many hours of hard labor - and many more facing them in the future - Sam and Helen are completing their home on an "ideal location". The tower is of BC variety, one section - 20 ft. long, required 3 men to lift it from the ground! This presents an idea of the type of construction of the tower. It is over 100 feet high, and has two 2-meter beams with screen reflectors on top.

Altho his new antennas and station are not yet completed, Sam's states-worked score puts most of us to shame. The transmitter behind his excellent signal is a pair of 826s loafing at 200 watts input. Sam's receiver is similar to Jerry's and uses 2 6J4s in a grounded-grid circuit.

(Continued on next page.)



W8WJC - W8BFQ, Everett, Ohio, Normal range contacts of 200-400 miles are made possible, largely, by the excellent antenna system.

It is of interest to note that both W8WJC and W8UKS use copper-tubing type coaxial transmission lines in order to minimize losses between the antenna and the shack.

Jerry and Margaret took us to Erie, Pa., to visit Herb Johnson, W3QKI, and Mary, his licensed - but inactive - XYL. Herb, you will remember, organized the Dawn Patrol on Two, 2 years ago following a suggestion by W2DOG. Herby and Mary have anything but a good QTH, at present, but hope to own a hill in the near future. We enjoyed a very pleasant evening with them.

* * *

W 9 F C N

THE MIDWEST VHF CLUB STATION
TO BE DEDICATED, SEPTEMBER 15

On Thursday, September 15, a special meeting of The Midwest VHF Club will be held for the purpose of dedicating its new station, W9FCN, to the memory of Elmer Dewey Sweeney, 1904-1947, v.h.f. radio pioneer.

Mrs. Elmer Sweeney, amateur radio friends of Elmer, v.h.f. operators and club members are invited to attend this meeting. It will be held in the Humboldt Park fieldhouse, at 7:30PM. The location, in street numbers, is 3000 west and 1400 north.

MILWAUKEE TREMORS

By: Vic Tresidder, W9TQ

"Was you dere, Sharlie?" .. on June 27th and July 22-23, in particular! We believe they dated the best openings, this year. More power to W3QKI, W8UKS and W8WJC who broke records on their contacts with W0BIP, and to W3CUM who set the new record with W0BIP. Some of the gang missed out.

Looking to the north with the beam, we found Neenah alive on July 2 and 20th; Appleton, also. On the 23rd, the Wausau, Willard and Neenah boys were coming through in nice shape. No Oshkosh or Greenbay signals, however. Keep going, gang; we have hopes for regular contacts, or relayed ones. It was slow going in the Spark Days, also, you know!

CGR, Chicago, and TQ tried schedules at noon and early evening in early July. Some success was had, due to part luck and plenty of patience. Also, schedules with HWX, Neenah, were kept but results weren't too good. Further attempts will be made.

Illinois, Indiana, Michigan and Iowa stations have been heard, more often. Also, the Chicago fellows, but mostly from the suburbs. City inactivity must be due to slow recovery from the heat! (Not entirely. - Ed.)

EAN is still working on a power supply. CXW: what??? WWH now worried about the roof. EXW/9 operated near Oconomowoc during his vacation. LJV is heard more often, in the p.m., on A2, quite regularly. YFT got his new 2 over 10 beams up and knocked off 8 states in one night with a 3-cl. horizontal, 56' high, and an ARC-5. YYY still after wrong-way electrons. AFT is still trying out changes on his 522. TNK is busy with beams. GJE has a VHF-152A, now, and seems to be doing right well from Racine. JPK is on, more often; more good nights.

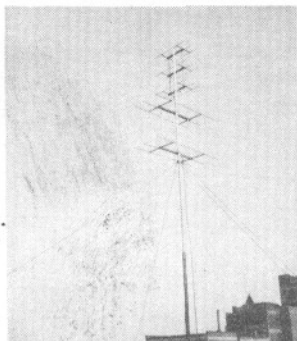
UMJ had a nice vacation; HJW has a new tower and beam up; sounds like it! FES is doing better with his new beam. AVF and EFM - no hear. LPF is doing well. W9TQ says 2 weeks time is too little for a vacation!

Would like to hear more about activity in Wisconsin. Drop a card to me, if you know of any news.

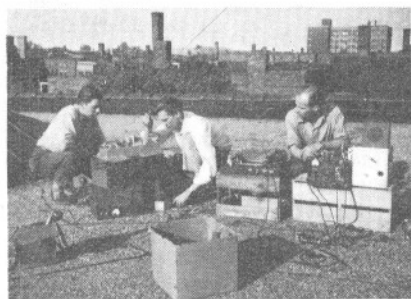
THE U H F WORLD

By: Jack Woodruff, W9PK

The Midwest VHF Club Picnic gave me an excellent opportunity to find out how you fellows feel about work on 220 and 420 Mcs. On 220, the consensus of opinion seems to be that we should start right out with crystal control and superhet receivers. On 420, some of the fellows want crystal; others want modulated oscillators, so let's get on the band with whatever we have, but at least have our receivers capable of receiving modulated oscillators. Horizontal antenna polarization will be standard on all uhf



The 220 and 420 Mc. beams at W9GLY



From left to right: R. Taylor, SWL, W9BKK and W9LWE on the roof at W9GLY with u.h.f. gear set up for the V.H.F. Contest, last June.

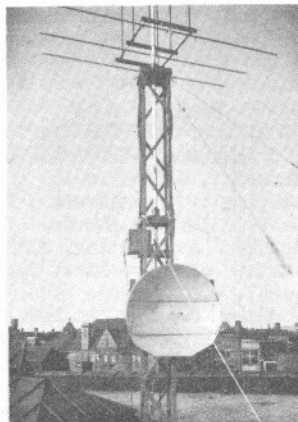
controlled transmitter with an 832A final, 30 w. input on a.m. fone and c.w. The receiver is a 1N21 mixer, 955 butterfly oscillator, into an APR-5, 30 Mc. i.f. The 420 rig is a p.p. 8025 modulated oscillator with 50 watts input. The receiving setup is the same as for 220. On 2300 and 3300 Mcs., W9GLY has cavities using lighthouse tubes, and the APR-5 receiver. A parabolic antenna is used. (See photo, below). Contact has been made on 2300 Mcs. with W9LWE. The 220 beam has 2 stacks of 6 elements. The 420 mcs. beam has 3 stacks of 6 elements, the top stack being 82 feet

(Continued on Next Page)

bands, according to many opinions.

At first, I was worried about the source of activity, but the two meter gang seems willing and capable of doing the job. All reports we have of propagation seem to point out that it will not be often that you will miss an opening on one band while working an opening on another. The answer is to have capabilities of working all 3 bands, and getting in on all of the openings. Enthusiasm runs high, and it is just a matter of time before we have some nice activity on both 220 and 420 Mcs.

The outstanding u.h.f. station in the Chicago area is, undoubtedly, W9GLY, the station of the Electron Club, in Chicago. The accompanying pictures well illustrate what we mean. The 220 rig at W9GLY consists of a crystal-



2300 Mc. "dish" below 12 el. on 2.

The UHF World (Continued) . . . above ground. The 220 Mcs. beam is made of 3/8" tubing; 1/4" tubing is used in the 420 Mc. beam. Next month, we will give you exact dimensions of these beams; in the near future, we hope to present a complete description of W9GLY as "Station of The Month".

U.H.F. Activity Reports

W9LIR, Champaign, and W9FKI, Rantoul, Illinois, have been running some tests on 220 Mc. successfully. In Milwaukee, W9YYY and W9WTL have also been successful in their tests on 1215 Mc. W9CUP, Joliet, Ill., has a pair of 8012s in a modulated oscillator, with 35 watts input on 420. Terry has been working 3/4 mile to W9GCB, who has a 522 driving an 832A tripler. Both use super-regen receivers. These two fellows are good technicians, and surely do have the u.h.f. bug; we can expect a lot more dope from them.

Send your u.h.f. reports to W9FKI!

* * *

A SIMPLE DIODE-TYPE NOISE GENERATOR

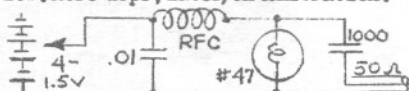
By: Robert Lopez, W6WNP

After a little study on v.h.f. receiver front-ends, one realizes that use of a noise generator is the only practical way to check the noise figure of the system. Having built one of these handy gadgets to get my 6J4 12AT7 converter down to 5 db, I now find that I hear a lot of strange, outside noises that were previously masked out by receiver noise.

I realize that everyone does not have the time or money to build a regular diode noise generator, so I figured out a little generator, not to replace the diode-type for accurate checking, but as a simple checker to provide a rough idea of noise figure.

One may obtain a good understanding of diode noise generators by reading "Electronics", July, 1948, "QST", September, 1947, and August, 1949.

Now, I have found that a #47 lamp, an r.f. choke, a couple of condensers and a battery - an old idea - works nicely on v.h.f. in the circuit below. More dope, later, on calibration.



W8WRN REPORTS FROM COLUMBUS, OHIO

Don't forget the Hamfest-Picnic to be held in Columbus at the Maple Shade Picnic Ground on Sunday, August 28th! As in the past, it is to be a basket-lunch affair. Activities begin at 10:00 AM. Equipment will be in operation on 2 meters, and lower frequencies. So, W8CPA and W8WRN will appreciate your presence, on the air, if you can't attend in person! Activities are planned to suit everyone's taste, especially that of the XYLs and kids, so enjoy the day with us!

Now, by way of some news. Yep, you guessed it! W8WRN missed the big opening of July 23 and 24! Was on vacation from work and 2 for one whole week. However, conditions on July 10, 11, 12 and 13 were very good. On the 10th, the Wisconsin and Illinois boys were rolling in. On the 11th and 12th, Illinois. The 13th brought W3WEM, Erie, S9; W3KWL, Farrell, S9; W3GEG peaked at S9. We have three active DX stations, here, now. W8BAX on 144.14; W8CPA on 144.6 and W8WRN on 144.67. Coming up is W8WAB, 146.34. He is building a beam and a 6J6 pre-amp. Using a 522 receiver and a folded dipole, he has heard several DX stations, including W9TKL. W8MEG has his 522 going, and says he'll be on with p.p. VT127As, soon. W8IVC has moved to Worthington, a few miles to the north. Can't tell it, the way his signals roll in. He'll have a beam up as soon as some house-work is done.

W8WYH, Franklin County EC, now has his 522 on the air, but the receiver isn't finished.

W8ZCQ says he'll be with us on two, soon; 10 meter TVI and 75 phone BCI finally wore him down! Also, looks like W8CPA will hit "6", soon. Understand that W8GZ and W8UZ are on 6, also. (W9NUT-Please copy. Ed.) WRN's plans slipped, but hopes to make it, someday, on 6. 2 meter mobile coming up for the new car.

(Ed. Note: W8BAX tells us "wha hoppen" to Ken, W8WRN - "WRN was off on a vacation with a new Buick, hitting the road instead of the open band! He missed the big opening, 7/23, and I beat him to Maryland! Hi!")

W5CVW REPORTS FROM FT. WORTH, TEXAS

In the Lone Star State, where the only thing to be heard on two is the howl of the coyote beating with the spurious oscillation of the 2nd pre-amp, a bit of glad tidings can be reported from Ft. Worth: 2 meters has come to life, again. July 4th started things hopping for the only active station in Cowtown, W5CVW. Yup, I'm the sole survivor, at present! A card from W5AJG got me to get up before the chickens for that good old Gulf Coast DX, which I missed out on last summer while the new tower was being built.

It seems like we have openings of 300 miles or more from 0630-0900CST when the band goes out. During this early a.m. session, signals build up from just above the noise level to a good S9 plus. Between Leroy and myself, we have heard: W5DKB, Vivian, La.; ML, Oil City, La.; IRP, Lufkin, Tex.; NQA, Houston; HPG, Brownwood; KFB, Baytown; DAA, Kingsville; OUG, Houston; DUK, Kema; DSB, Beaumont; OQJ, LaPorte; VY, San Antonio; NZX, Houston, Texas. Many of these came bouncing thru on July 7, while DKB, ML, HPG and IRP have been heard or worked a number of times. We seem to have two types of openings: a super-extended range, or sporadic E skip to the Gulf Coast and into Louisiana, and the extended ground-wave which goes only as far as Lufkin, and produces not too loud signals, with a great deal of QSB. The longer skip disappears, rapidly, as soon as any wind begins to blow. (A characteristic of ducting, or trapping layers, disturbed and upset by wind. - Ed.) Also, these signals will QSB out in the Dallas area, but - at the same time - they will be building up in the Ft. Worth area, and vice-versa. This, probably, would indicate the trapping type of DX. All stations listed were on phone, with an occasional contact on m.c.w. and, of course, all are vertically polarized, in this area. Would certainly like to see what horizontal would do under these same conditions. The majority is using low power, 20-100 w., into 522s or 829B finals. At W5CVW, the 522, with 28 watts input, and an

8-element vertical beam, was reported as about the same signal strength as the 250 w. at W5AJG ... or does Leroy run it up to a gallon? In other words, power doesn't seem to limit the signal at the other end, and neither does the type of beam have much to do with reports. When the band is open, all signals are good! In comparison to this, W5DFU, Tulsa, worked W0ZJB, Kansas City area, less than 300 miles, but had to use c.w. This, on horizontal! A 32 element beam was used by W5DFU. This is not given as any argument in favor of vertical over horizontal. It is just an interesting comparison. (Consideration could be given to the path, and to conditions over that path, compared to the same for vertical. - Ed.) At least, these openings have produced the 1st out of state DX contacts for W5AJG-W5ABN, Dallas, and W5CVW, Ft. Worth. Our farthest DX to the southwest has been W5HPG, Brownwood, some 80 miles over hilly terrain from Ft. Worth.

W5CVW will soon join the six-meter gang with 300 watts and a good beam, and a burning ambition to work some 1200 miles plus DX on 2.

W5LHF is still promising to put up a new tower for his two-meter beam. The rest of the Cowtown Kids must have moved to Siberia, as far as I know. Not a sound out of any of them. 73!

* * *

W9TKL TALKS

By: Betty Brown, Log-Keeper

Since July 10, this station has enjoyed the best DX in its history.

Stations as far east as W3GKP, AIR, Maryland, and northeast to Toronto, Ont., have been worked. The W2s worked are: J1W PLU RPO UTH YT UKP. The W3s QSOd are: QKI RUE KQH QCN NOJ KBA VZA OWW OYK WEM KWL AIR HWN NKM BLF CUM CTN PGV GKP. W4s contacted were: OXC and FBJ. As for W8's, W8 DOE TRF GQG VOZ BAX CPA QVK HRF AFU BKI (W.Va.) EHA UKS WSE YGM ZRC UB YEG AMQ HFQ WJC DUL and WLJ. Also, several good contacts were enjoyed in the 9th call area with best DX to W9 FPE, Willard, Wisc., and W9JFB, Wausau. Also, W9LLA LIR FKI FWJ BPT JDD MBI WWE and ACC were contacted. In W0, W9LWE/0 BIP BJL EMS BZE and ZJB were hooked as were VE3ANT AID BOW.

W9LWE/Ø AT CALEDONIA, MINNESOTA . .

By: Bill DuHart, W9LWE

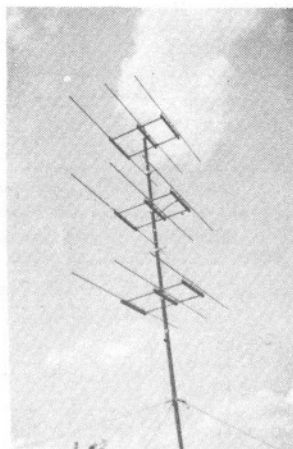
On July 4th weekend, W9LWE and W9BXX made their second annual journey to Caledonia, Minn., to enable other 2-meter stations in the midwest area to work that state. The results of the trip were better than those of last year because of the bigger array and better equipment used. Stations in 6 states and 3 call areas were worked, the best DX being W8WJC, around 500 miles, and W9UCE, Ft. Wayne, Indiana. A total of 16 stations was worked, not one of them was closer than 125 miles, with near normal conditions on the band. Worked: W9s TKL EHX BBU JDD MBI ZHB UCH JIL PZS PK DXK PM CAW WØ W9Z JHS and W8WJC. Heard: W9s EGH GLY CVS and DRN.

The transmitter was p.p. 24Gs, 50 w. input, driven by W9RTY's 522. Receiver was W9UMD's VHF-152A, with a 2-stage preamp, into an SX-25. The antenna - our own! - was 18-elements, 3 stacks of 6, on a 35 ft. mast, fed by coaxial line.

"Cueing" was done on 40 c.w., which kept us in contact with the Electron Club station, W9GLY, 24 hours a day. Conditions on 2 seemed normal, with a slight opening occurring on July 2 evening.

W9LWE will appreciate any heard reports and other information on the signal from Caledonia. A return trip is being contemplated for the weekend of the September v.h.f. contest. Cards will be sent in advance to interested parties if this plan materializes.

Use c.w. to work DX!



THE 18-ELEMENT ARRAY AT W9LWE/Ø

W4FBJ/4 AT WHITE TOP MOUNTAIN, VA.

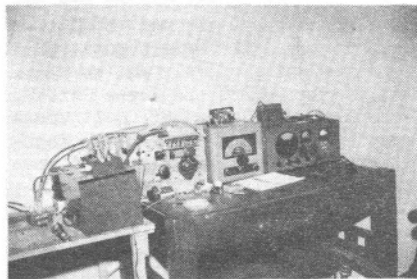
Our trip to White Top Mountain was very successful, considering that we had some of the poorest conditions experienced on 2 meters. No help was had, at all, from inversions. The location, 5433 ft. above sea level, enabled us to work 8 states.

Contacts made were: W4CPZ, S.C., W4HVT, N.C., W4JFV, Va., W4OXC, JDN, MKJ and KLP, Ky., W8EP, BKI, JKN, W. Va., W8WJC, W8UKS, WRN, CYE, CPA, ZUR and WSE, Ohio, W9JMS, Indiana, and W9FVJ, Illinois.

Vertical was tried, but no signals were heard. Couldn't hear W4HVT on vertical, even though we were S7 on horizontal. We were less than 75 miles apart. Note: the east-coast gang operate above 146 Mc.

White Top Mt. is a v.h.f. haven - stations from all over can be worked on 6 meter ground wave. W8WSE, W4FWH, Nashville, W4FI, Gallatin, Tenn. and many others came thru, but had to go to 2 meters. Too many 6 meter stations to list!

To anyone planning an expedition: a log cabin, with well-regulated a.c., is available at a reasonable rate, on top of the mountain. You can drive all the way to the top, too! Drop a line to White Top Co., Arlington, Va. I'm going back, before summer is over!



THE EQUIPMENT SET-UP AT W9LWE/Ø IN CALEDONIA, MINN. W9BXX-W9LWE OPERATED.

WHAT IS A RECORD? . . .

Some reports of mileage of Two Meter DX Records don't agree with others. Some time ago, it was suggested by a Two-Meter DX Recordholder, who suggested that his identity be withheld, that a VHF DX Record Committee be formed from the v.h.f. staff of "CQ", "QST" and "The VHF News". Inasmuch as the suggestion was not directed to this publication, nothing could be said. However, inasmuch as some disagreement exists in reported DX between W0NFM and W5JTI, vs. W3GV and W0WQZ, we requested some impartial reports from active v.h.f. men.

W2DOG, G. S. Wickizer, calculated W3GV-W0WQZ, 649.54 miles, by spherical trig; W0NFM to W5JTI, Jackson, Miss., 660.91 miles (statute).

W3GKP, W.L. Smith, calculated W3GV to W0WQZ at 648.4 miles; W0NFM to W5JTI, 661.7 miles.

W3HZF, L.B. Gilmer, calculated W3GV to W0WQZ at 652.3 miles, and scolds us for reporting it as 660 miles, - and gives the W0NFM - W5JTI contact as 660.7 miles.

We have, therefore, in favor of the W0NFM-W5JTI contact, an average, calculated advantage of 11 miles over the previous record holders.

As for the W3CUM-W0BIP record, which followed the W0NFM-W5JTI contact only by a few weeks, W3QKI puts it at 802 miles. W1HDQ, Ed Tilton, will announce it as 800 miles, before he has time to calculate it. W3HZF says, "Isn't it the d--st thing, the way these guys mess around with the 2-meter DX record? These guys, W0BIP and W3CUM come along and upset everything!" Lew calculates W0BIP to W3CUM DX as 796.37 miles, assuming Elliot, Ia., as 95° 9' 6", long., and 41° 08' 53", lat. We think it safe to say the contact covered 800 miles, but feel that a committee of active, amateur operators on v.h.f. should be appointed to arbitrate contacts which are close enough to decide on the basis of careful measurements on a road map! Then, perhaps, we can dispense with "overnight" authorities who confuse the facts. If you know of a ham, on 2, qualified for the committee, tell us!

W3QKI REPORTS FROM ERIE, PENNA. . .

On the morning of July 23, W0BIP was coming in from Elliot, Iowa, some 750 miles away. His signal was a good S5, on peaks, but - despite the gallant efforts of W8UKS - he could not hear me. Apparently, his receiver needs some work, since I was running twice the power he has, and was modulating heavier. Old Sam, W8UKS, cracked the record, first, with W0BIP, for some 710 miles! Cookie, W3CUM, Butler, Pa., stretched it out to about 802 miles! That is known as breaking the old record by a good margin, hi!

Even better, W2PLU, Buffalo, heard W0BIP R5-S3, peak, at 842 miles!

The longest contact, and what I believe to be the runner-up for DX was the W3QKI-W0EMS contact, about 754 miles. Also, worked W0WQZ, the ex-record holder.

Two meters is "bustin'" wide open, this year, and it looks like a landslide for horizontal! Results and reports will speak for themselves. Only 3 of us are active in Erie, at present: W3WEM, W3NOJ and W3QKI. We feel quite stymied as far as working lots of states is concerned, since we have this big ridge to climb over, going south or east. But, at least, we listen in, and can hear what's going on. The three of us have worked 9 states each, the same 9, plus VE3, and W3QKI holds the Erie DX record at 754 miles, to W0EMS.

W3WEM might have worked W0BIP, since he puts out the best signal from his hillside location, but Frank was asleep, that night, and has no phone! W3NOJ was on vacation from his new 24-element beam, so, only W3QKI was left to guard the Erie reputation!

On the evening of July 19, we had a visit from W9BBU and Irene, W8UKS, Helen, and W5WJC and W8BFQ! It was a very pleasant surprise. Too bad Blackie's new location isn't so good; hope he does better, soon.

Have been pleased to hear W9DXX coming through, several times and hope to QSO you fellows in the near-Chicago area, soon. Without polarization to write about, I'm lost!

WPIV REPORTS FROM E. FREETOWN, MASS.

On Saturday, July 9, the band was open on the east coast to southern Virginia, some 470 miles. On Sunday, the weather was very windy, up to 40 m.p.h. gales, with rain all afternoon and night. Several CQs to the west brought no answer at 11PM. On Monday the band was just about normal to the W2s. We keep nightly schedules to W2 ACY, Schenectady, NY., about 170 miles NW, over the Berkshire mountains, 3000 ft. The band seemed better, and I thought it should be good towards the west, so I decided to stick it out. We heard W2BAV working to the west, but we were unable to hear any thing. Finally, at 2321, we heard W8 UKS, and worked Sam for about 10 minutes with good signals. This was the first Massachusetts-Ohio contact. At 2358, we worked W8WJC for about 15 minutes. At 2430, the W8s faded out, and we hooked W3KBA, Dover, Pa. At 0130, the band closed, completely.

The next night, July 11, nothing further than Schenectady was heard, here.

W8UKS was heard, also, by W1BCN, 40 miles south of here, and by W1MNF, 65 miles east, on the tip of Cape Cod! Believe W1MNF and W8UKS finally exchanged calls. Now, at WPIV, we have 13 states, 5 call areas, VE 1, and we're looking for W9s!

W1OOP REPORTS FROM "CHEEZ OOP", BOSTON.

VE1QY was very strong, last month, and we finally hooked up with him on 2, and he heard the 829-plus-folded dipole on 220 at 270 miles nearly as strong as the 829 plus folded dipole on Two. However, my only available 220 converter would not hit 238 Mc., so no two-way contact. This happened on the night after W1CTW broke the record with VE1QY. W1IO schedules and works VE1QY, easily, anytime his 144 Mc. sig comes thru. Bob has a 16-element beam. So, although, I have worked into the state from Maine and Vermont, I haven't been able to work out. The best two-way DX is still W1MNF, around 60 miles.

On July 9 and 10, W1JDF PZA and OOP, with assists from W1CNX, operated portable, Mt. Kearsarge, N.H. Score was:



"Audi alteram partem"
(Hear the other party; hear both sides.)

EDITED AND PUBLISHED BY:
BILL MC NATT, W9NFK
FRANKLIN PARK, ILL.

Subscription Rates: In U.S.A., Possessions and Canada, \$2.00 per year. Elsewhere, \$3.00. Single copies of current Volume, 35¢ each. Please do not send stamps or Postal Notes.

All editorial contributions will be appreciated, and should be mailed on or before the 25th day of the month for publication in the next issue.

40 W2s, 11 W3s, 21 W1s, 2 W4s, best DX, 520 miles. With more soup available from the gas generator, we could have done better, but the 350 w. limit made simple equipment mandatory. Even so, the a.c. was at 105 v. most of the time.

A new converter was built a couple of months ago. W1HDQ, "E.P.T." saw it first, so it will be described in "QST", soon. (Imagine Tilton seeing it first, and me only 1000 miles away! - Editor). It's worth considering, the Noise Figure is better than 5.5 db over the entire band, with proper adjustment. The total tube cost is less than \$8.50, list. At surplus prices, you can do it for half that; less than the cost of 1 6J4! (Watch "QST", September or October for W1 OOP's converter article! - Editor) The only other news is that the Boston area, thanks to W1KIM's evangelism, is very "receiver conscious"! Most "receiver conscious" hams live in the valleys; the fellows on top hear DX, no matter what they use!

CORNER REFLECTIONS . . .

Briefly, fellows: what a month! The best reported DX on Two; the best VHF picnic - The Midwest VHF Club affair, Sunday, July 31 - The best reports; the least time for "The News".

SIX METERS IN JULY

By: Don McCaskell, W9NJT

July openings, although tapering off in comparison to the heavy schedule of June openings, showed a total of 27 days of activity ranging from several intense openings to a number of rather spotty sprays of sporadic E. Openings reported during the period are as follows: July 2: W5 to W8-9; July 3: W9 to W5; W5 to W4-6-9 and XE. July 4: W5 to W1-2-3-4-8-9-0 and VE3. July 5: VE5 to W7; July 6: W5 to W4-6-7-8-9-0; W6 to W4; W7 to W0. July 7: W9 to W4-5-6-XE; W5 to W3-4-8-9-XE; W6 to W9-0; W7 to VE5. July 8: W6 to W9-0; W9 to W6-7-0-VE1; VE5 to W7-9-0. July 9: W5 to W6 7-8-9; VE5 to W0. July 10: W9 to W1-2-3-4-7-VE1-VE5; VE5 to W9-0. July 11: W9 to W4-5-7; W5 to W1-2-3-4-5-6-7-8-9-0, VE5, XE1, VE3; VE5 to W5-7!! Terrific.

July 12: W9 to W4-5; July 13: W4 to W9, W5 to W3-4-8. July 14: VE5 to W5-W9; July 15: W9 to W4-5-7-VE7; W7 to W1-2-3-4-7-9-0, W5 to W2-4-8; VE5 to W4-5-7-9-0, VE7.

July 16: W9 to W4-5. July 17: W5 to W3-8-9-0-2; W4 to W8-9. July 18: W9 to W1-2-4-5; W4 to W9-0; W5 to W4-6-7; VE5 to W7-VE7. July 19: W5 to W1-2-3-4-6; July 20: W5 to W4-6-9; W9 to W5; VE5 to W5.

July 21: W5 to W8-9; W9 to W5; July 22: W5 to W9; July 23: W9 to W5; VE5 to W0; July 24: W3 to W9; W9 to VE5. July 25: W5 to W9; July 26: W9 to W5; July 29: W9 to W5; July 31: W5 to W9.

Notification has been received that Bob, W0TEK/KL7, is active on Shemyu Island, in the Aleutians. The Roving Mariner advises that he will remain on that location until about the end of August. He is located about 1500 miles west of Anchorage, and is looking for sporadic E signals.

Independence Day found Floyd, W4FBJ, Sheperdsville, Ky., operating portable on White Top Mountain, in Virginia. A number of stations worked Floyd for another state. FB!

July 4th furnished a flurry of excitement on Six when it was reported that W8TOB, Lorain, O., heard a signal on 50.8 signing, "CNS", at 1.19, EST. Chuck couldn't catch the entire



Many leading Six Meter Operators attended The Midwest VHF Club's Second Annual Picnic on July 31. Left to right: W9PK, NJT, ALU, QKM, W0HAQ, W9BHH, (?) W9WFC, W9 CSZ, JIL, ZEB and AQQ.

call, and authenticity is questioned. Could someone with a heavily-overloaded final have been on, due to the holiday, Chuck?!!

K6EF, formerly XELKE, is putting out the usual swell signal from California, and should give the W6 gang plenty of competition.

Ed, W5ELL, Albuquerque, N.M., is moving to Denver, soon. Ed has been operating portable from Roswell, N.M., occasionally.

Steve, HC2OT, Guayaquil, Ecuador, is hanging on, with 16 states and 10 good countries. Steve is doing his best to get more activity out of Central America.

Bill Carley, W3PCB/W4MWI reports that the results of his poll are as follows:

Of 201 ballots returned to him, regarding the 100 kc. exclusive c.w. assignment of 50.0 to 50.1 Mc., 66 FOR; 135 AGAINST. Results of this poll have been forwarded to the FCC for proper consideration. Charles Wright, W4HVV, collaborated with Bill in making the poll possible.

The recent splatter of IX signals on Two Meters is bringing home the fact that the Two Meter gang is going to depend more and more on Six as a liaison band, with many of the Six Meter stations operating on Six and Two, simultaneously. We urge - and you should, too - that more of the 144 Mc. gang come to Six in order to use it for band propagation observations!

WSWE REPORTS FROM CLEVELAND, OHIO.

It seems as though the real DX men are not keeping you too well informed, so here's some information that may be interesting.

On July 4, W4FBJ/4, on White Top Mountain, Va., was finally worked after quite a battle of calls on c.w., phone and m.c.w.! Was glad to get him for state #9. Later, that night, W3 GKP's CQ came rolling in, and we had a nice QSO for state #10.

On Sunday, July 10, W9HXS was coming through like a local, as were W9s ZEB GZQ PZS GUA WWH MGP EEO JIL FVJ SUV GLY WFF W4JDN WSRKE. Was very glad to work W4JDN for my first Kentucky contact, state #11. Did not hear any Iowa stations, but W0 BJJ, Missouri, was coming through.

The band was open again, the next night, but nothing new was heard. Besides, W9s were after W3s! But, at 10:30, EDST, W0NFM, Solon, Iowa, was heard S8. I went after him, but fast and marked up #12. Later, W0BZE, DEN and HQA were worked, 620 miles to W0HQA which broke my best DX by 165 miles. W3s and stations in Michigan and northern Indiana were not hearing W0s, apparently. Somewhat later, W3 UKS and W3WJC were heard working W1s but none could be heard, here. Signals from W3BLF, KBA, HWN and GKP were quite weak, but maybe their beams weren't headed to the west.

In reviewing the log for July 22, it seems the evening started, slowly. W3EP was the first contact. Then, W3EWN was heard; suddenly, stations in Pittsburgh, Dayton, Toronto and "all over" came through from 100 to 150 miles. Then I heard a rumor to the effect that a Minnesota station was heard, but after listening in that direction, little was heard other than Indiana stations working into Illinois, Wisconsin and Iowa. Signals, generally, were weak, but W9LLA, Indianapolis, was coming in S8 on our contact. Then, that guy W0BIP started to come through! W3WJC got him; then W3UKS got him. He was heard, good, here, but I didn't call him because the W3s - QKI RUE NKM CUM and VE3AIB were calling him almost frantically! Well, as so many

now know, W3CUM hooked him for the new DX record on Two. I pulled out at 3AM, but understand that W3RUE, NKM and QKI later worked W0EMS, Adair, Iowa, about 40 miles east of W0BIP. (See W0EMS' report, elsewhere in this issue. - Editor.)

On July 23, I monitored the band all day. At 3:48, W3ZRC, near Detroit, was worked. Then, W9HKQ, S8-9. Suddenly, everyone realized that the band was wide open! W0TKL made his entrance on the band, and a new station seemed to come on every 15 minutes afterwards! I figured I'd work the western fellows, early, and look to the east, later. W3ZRC, W9HKQ, MMG W8TOB, W9GLY, JIL, CGR, VX, ZHB, TQ, GJE, BEU, DRN, HTJ, YFT, PM, VE3HPB, W8EBO and W8RKE were worked up until 10PM, when I listened to the east.

W2EH and W2PAU, New Jersey, were heard, but not worked, but raised W3s KBA, GKP, OWW and ELF. W8UKS and WJC were working the fellows on the east coast of Virginia; I managed to snag W3KCA, Baltimore. Heard W4JFU, LVA, AO, BOT and W8EP.

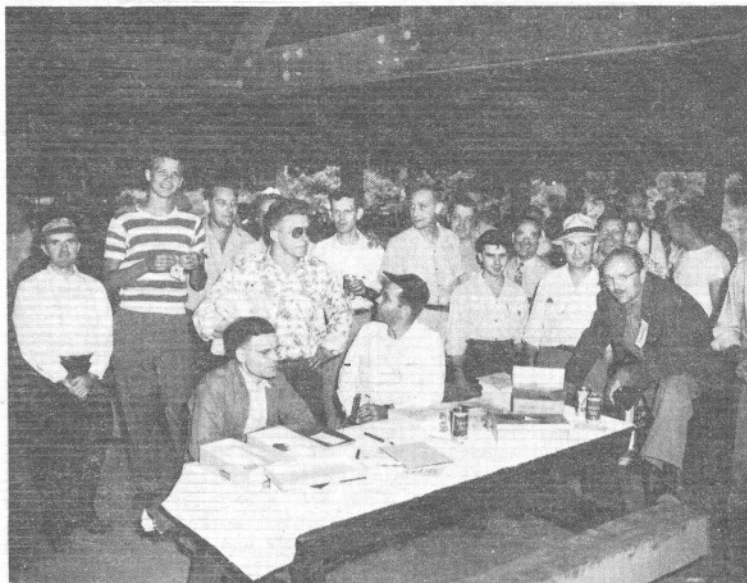
The next morning, the band was still open to the southeast. Stations in eastern Pennsylvania, W. Virginia and Maryland came in good until 11AM. A lot of fellows sure did fatten their states-worked scores!

In looking over the log book of this sequence of openings, it took only 8 days to work 12 states, 6 call areas and VE3, after sweating for 3 years on this crazy Two Meter band! Hi!

* * *

MIDWEST VHF XYLs MEET . . .

The XYLs of several two-meter men recently decided it was high time they get to know each other. As a result, a meeting was held on August 5 at the home of W9BYG, Marty Danner, XYL, hostess. Attending were: Judy Burke (W9VX); Rosemary Mendelsohn (W9OEW); Terry Landeck (W9WOK); Helen McNatt (W9NFK); Ruth Duffin (W9CZR); Eva TerVeem (W9MV); and, Lorraine Stanton (SWL). The gals welcome any interested XYL of a v.b.f. ham. Meetings will be held on the last Friday of each month. Next hostess: Helen McNatt (W9NFK). Notify W9BYG's XYL if you will attend. Phone HO 5-0959.



THE MIDWEST VHF CLUB SECOND ANNUAL PICNIC. Above: (L-R) John McCarthy, W9TUZ W9KLG, Joe Sheffer; W9HIF AQQ Doug Taylor W9NE W9KHI W9BYG—CM W9EQG W9QM W9BFY. Seated: W9AYM, W9WCK. Below: Some of the Picnic Committee, with W9KLG, Joe Sheffer, Newark Electric Co. (L-R): W9EXS VX CBW NFK KLG CZR and W9RTY.





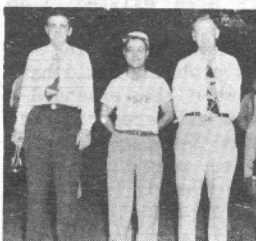
Above: W9WOK/9 operated 2, 6 and 10. Seated: W9OEW, WFC, (Operator?). Standing: W9BQC, ?, ONO, ADF, ?, W9VX, W8VIB, W9KIQ, W9BYG-QM. Below: Some of the 2-meter handy-talky gang - W9ZYF BYG PEN GLE OT and UMD. (Photos courtesy of Joe Sheffer, W9KIQ, Newark Electric Co.)



MIDWEST VHF CLUB PICNICKERS . . .
Ragchewers, DXers, Old Timers!!

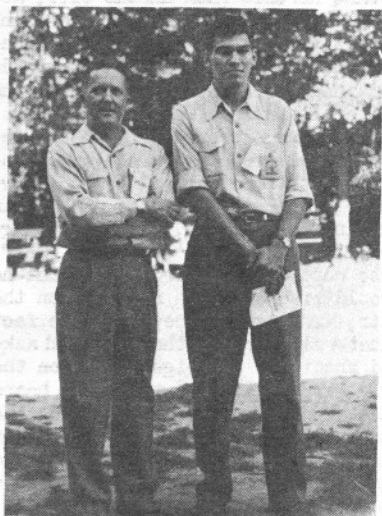
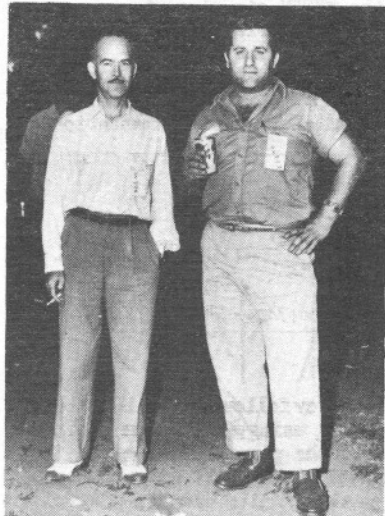


OLD TIMERS: W9HPG, FVD, NW, IJD, CK
and CSZ. W9CK and W9CSZ tied for 1st
Prize. Licensed since 1911!



VHF
News
Boys
W9PK
W9NFK
W9NJT

W9WH and W9HM, Racine, Wisc.

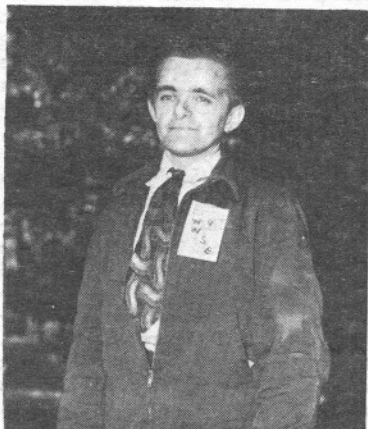


Jerry Keefe, W9HAQ, and Arnold
Bucksbaum, W9WZ, Iowa.



THE INDIANA TURNOUT.

W9SE, Mike Hoychuck, Ohio.



WOMNQ REPORTS FROM KANSAS CITY, MO.

In the Kansas City area, on the night of July 22, it was believed that conditions would be favorable for extended range work on 2, that night, and several stations were on the alert, having been prompted by WOHQA, Des Moines, who reported Michigan and Indiana stations coming through. However, nothing of importance came in during the evening. In Iowa, things were happening, tho'. Dwight, WOBIP, who copped the record, said that he would probably have not been on the air, that night, except for the fact that a visitor saw the beam, and asked about it. So Dwight turned on the rig for a demonstration, and heard the band wide open! In making the new record, WOBIP gives credit for an "assist" to WSUKS, whom he had worked, and who later told him he was being heard in Pittsburgh and Erie, Pa. Now, for a description of conditions prevailing on July 22-23.

The situation was similar to those existent on the evening of July 10. A high pressure area was centered over the northern Great Lakes area, with an old, almost stationary front extending in an east-west direction, south of the path. This extended to Springfield, Mo., Louisville, Ky., Cincinnati, O., to just south of Pittsburgh, and then turned to the northeast. Again, the areas in which the two record-setting stations were involved were not particularly favorable, but the area between those stations was really hot! The path extended almost due east-west along the 41st parallel and, along this line, the radiosonde observations from Omaha, Joliet, Toledo and Pittsburgh were investigated. At Omaha, a rather weak inversion existed between 3300 and 4500 feet, with a rather pronounced moisture-lapse. At Joliet, a strong inversion existed between 3800 and 5200 feet, while at Toledo a good inversion existed between 4800 and 6300 feet. At Pittsburgh, although conditions were only those of a standard atmosphere. Computations of the refractive index along the path were not made, due to incomplete data from Joliet and To-

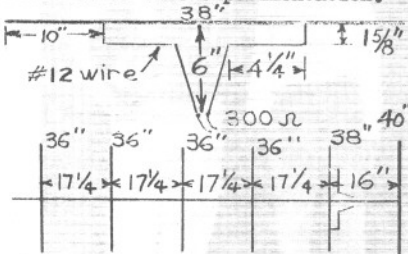
ledo. The moisture lapse across the inversions became so great that the instrument was unable to follow it, and, therefore, values were not transmitted.

While conditions were similar, in many respects, on both openings of July 10 and 22nd, I do not consider this sufficient proof to advance another theory on the propagation of two-meter signals. If we can find similar situations on a few more openings, this year, I believe a new approach can be worked out. I would say - and this statement will be borne out by many other two-meter operators - that there is more than one type of opening. In both of the instances described, here, even tho a high-pressure area existed, I do not believe that the pressure area was the primary factor producing the opening, but it probably would have to be present when the extended-range conditions on 2 are produced.

Inasmuch as the 2-meter DX record was shared by so many during the past month, I wonder if the WOBIP-W3CUM record will stand until our next writing!*

* * *
THE W9EHX "SIX-IN-LINE SPECIAL"

By: Harley, "Hod", Christ, W9ALU
Here is the information on W9EHX's "Six-In-Line Special", an adaptation of the W9NEM six-element array, originally described in the March, 1948, issue of "The VHF News". In place of the folded dipole, Red uses a T match to 300 ohm system which he derived after some experimentation.



Quite a few fellows on Two have built this beam, using #9 aluminum clothesline for the parasitic elements. The beam is lightweight and withstands the weather quite nicely.

INDIANAPOLIS EAVESDRIPPINGS . . .

By: Marge Bowman, XYL-W9GLW
 "Drippings", my eye! For four solid nights, 'twas a virtual flood, adding 10 new stations for a total of 48 we have heard.

7/10: GLW dashes to turn antenna -- quote, "Just heard a W3!" Yoicks! Shoving him aside, to work on our 2 meter rig, I listened and heard W9ZFA South Milford, 522 with 15 w. working FVJ off the back of his beam; also EHX, 4FBJ/4. Floyd, operating near Tennessee, worked 9ASM, LLA, TKL and W8UKS. ASM, heard by W4, Tennessee, was busy with W8BFQ (hi, Margaret!) and W8UKS; LLA snagged GSY and GZQ. The really busy W8CYE hopping from W3GKP 9AFT EFM TQ and JLL to W0RNC! W8WRN on c.w. We never did hear the W3, again; Clint says it was W3G..? W3GV or W3GKP?

7/11: With WOC-FM on, it behooves me to look on 2 and find HKQ JMS FVJ and LIR coming in like locals. ASM and EWO in QSO with - horrors! 4FBJ an S8! Oh - he's cross town at LLA! That Floyd! Saturday, he was on top of a mountain in Va.; Sunday, Tennessee; Monday, Indiana! Where next? Sometime, ask the "Ol' Man of th' Mountain! Whsee!

7/12: W4FBJ/9 - Lebanon - workin' NSF JMS and W8ZUR. 8CYE still at it with 9FKI HKQ FVJ and 0BJL. W8s WRN and WJC, in and out.

7/13: Beezus is good - JMS with W4 JDN and 8MGO(?). W4FBJ/9 to LLA EHX and SUV, with Floyd wishin' he'd been on the mountain the night of the 10th! Plans to return in August or September.

7/14: With 4FBJ's rig tied out to his own antenna, EWO works LIR FVJ ASM AQQ VXR ZHB and 4MKJ. That Ky. rig gives Norm a drawl; sounds just like Floyd!

7/15: ASM LLA and 4FBJ talkin' up Turkey Run Picnic to ZHB EKS and TKL.

7/16: SUV calls CQ. 4FBJ/9 still at it about the "Turkey Trot" to HKQ and - glory beee! - W9BEU and NFK.

7/17: Now I have faces to match voices! W4FBJ, MKJ, W8CYE, W9ASM EWO FKI FFD FVJ EKS IAW JMS LIR LLA and Howard, swl, turned up at Turkey Run for a super day of gabbing! Muchas gracias

for wanting me in the picnic, fellers; when I get those elusive, much wanted call-letters, I'll collect on that rain check. 4FBJ boosting activity: VXR HKQ MGP GZQ GSY JMS and GTA.

7/18: ASM LLA MBL PEV EWO GTA GZQ and W8CYE still in the clutches of activity! DOK reportedly under TV's influence -- shucks!

7/19: Back to normal, huh, Norm? EWO, period. Double shucks!

7/22: Shucks! Looks like DX previously heard was only peanuts! 8CYE working W3CUM, 2SCG/2, 2RPO, 9ZHB, 0EMS. TKL busy with 0BIP and 0BJL; 0E?? with LLA and EHX. LLA and AQQ to W0WZG and 9YFT. MBL, the "0's" friend: 0EMS BZE and DEN. 9ZHL, new for us and loud, with 9GSY, 3QKI, 0 BZE and 9EWO. 0BIP coming in like a local, working ZHB TKL ZHL SUKS 3QKI and W3CUM!! There went another record, jus' like that! W3CUM-W0BIP!

7/24: W9EWO says his "CQ-2" at the Tippecanoe Picnic turned out W9MEL ZSC HKQ CAW VNV BSZ PHV BHV FER RHL LNX DOK BCJ LLA and EWO.

* * *

NOTES ON TWO FROM SOUTHERN ARIZONA

By: Jerry Walker, W7FGG

No real DX to report, as yet. We do have a station on in Nogales, on the Mexican border. "Doc" Attwood, W7KRC, is using an ARC-5 transmitter and a home-built converter supplied by W7 SLO. "Doc" uses a 10 element, stacked, horizontal and lays an excellent signal over the very rough path of 65 miles to Tucson.

The possibilities of getting Casa Grande on the two-meter map are very good. W7RJR has interested himself in the two-meter tests being run on every Sunday from Tucson and vicinity. He's looking for a 522, and will conduct listening tests for Tucson and Nogales until the 522 is converted. In Tucson, activity has been kept at high level by Sunday tests throughout southern Arizona. W7SLO, LLO, KRC LFX MDM and FGG are active. SLO plans to try horizontal for a while. LLO is looking over preamps for his VHF152A. MDM, newly on in Tucson, is very active. LFX investigating 16-element beams. CWX QRT heat. QAP coming back.



"Audi alteram partem"
(Hear the other party; hear both sides.)

EDITED AND PUBLISHED BY:
BILL MC NATT, W9NFK
FRANKLIN PARK, ILL.

SUBSCRIPTION
\$2.00,
1 YEAR

CIRCULATION: U.S.A., HAWAII,
ENGLAND AND HOLLAND.

W9NFK
THE
VHF
NEWS

Bill and Helen McNatt
2433 Elder Lane
Franklin Park, Illinois

W3NOJ REPORTS FROM ERIE, PENNA. . .

Sunday, July 10th was a warm day, with no wind, in Erie. Upon returning home from a picnic, we found the Chicago and Milwaukee TV stations rolling in, and immediately made a mad dash for the two-meter rig!

The first contact was at 1042EDST with W9OEW, followed in rapid succession by W9s WCD NFK ZFA PK JIL PZS WWH and EHX. Signals were very steady and averaged Q5 S7. Heard W9TKL, GUA.

Monday night was also quite good. I worked W9FM, Port Washington, Wisc., at about 940PM, and then worked VE3 DAN, W9ZRC, RLJ and GOV. This was the night when Sam, W8UKS, and Jerry, W8 WJC, worked W1HDQ, W1PIV and others. I remember W2BAV, especially. I don't think I know of a more futile feeling than sitting at the rig and drooling over Sam and Jerry working such choice bits of DX, while I can't hear one peep out of them! Heard W0EZE CQing at about 1115PM, but he didn't hear me. Finally, at 1218AM, I heard W3GKP rolling in, Q5, S3-4, CQing on CW. I called and called, but no dice. This was the first time he has been heard over the mountains into Erie.

That night, W1HDQ and W8UKS were comparing horizontal versus vertical. Maybe you can get some comment from Sam as to the results. (Nothing heard from Sam. - Editor) It seems peculiar that, in all the years that vertical polarization has been popular on the east coast, no spectacular DX was worked!

The rig at W3NOJ consists of p.p. HK 24Gs in the final, 140 w. input. The antenna is a 24-element parasitic array, consisting of 8 3-element arrays stacked 2 high and 4 wide, 30' high.

The receiver has a 6J4 r.f. stage into a 6AK5 2nd r.f. into a 6J6 mixer, crystal-controlled, feeding into an NC-173; we have lots of bandspread.

Plans for the summer include raising the antenna to about 80 feet, and replacing the RG-8/U coaxial line with gas-filled, copper coaxial line. The score, here, is now 8 states, VE3 and 5 call areas.

* * *

MOVING? If you are, please send your new, correct QTH to us, now!

THE TWO-METER BAND OPENING OF JULY 10 TO JULY 12 AS HEARD AT W2BAV

On July 10th, although, the weather map showed approaching good conditions, east to west, I listened on the band from Rye, elevation 50 feet, to locals, only. No sign of anything else was heard. The XYL said, "You can't go up on the tower, every night!" Let W3KBA and others report on this night; he worked W9TKL.

On July 11th, we were ready, as the weather map showed an elongated high covering New York and the east part of the Great Lakes. Early in the evening, W8UKS was the star, with a signal up to S7 plus. He reported plenty of stations calling me, but I can't remember who. I can't remember who was calling him, either! I told him about W1PIV, who worked him, later. Then, W8RS and W8UB were worked. Also, they said that "plenty of stations were on in Michigan and to the west." However, try as I did with a 48-element, horizontal beam, and 3 stages of grounded-grid lighthouse tube r.f. stages, I could not hear anyone else to identify. One station, about 5 kc. higher than W8UKS, was calling me on m.c.w., but didn't copy him. Who was it?

On July 12th, the weather map showed weak possibilities. The band seemed absolutely dead on the east coast. No one was working any W3s or Massachusetts stations. But, now, knowing W8UKS' frequency, beam position and voice, we brought him out of the noise for about a 75% QSO, here. Also, W3RUE, Pittsburgh, came through about 80% OK. Incidentally, why all this urge to go on c.w.? On 10 meters, the phone lads do all right. Why try to cause a lot of difficulty on 2 meters? I have no b.f.c., no key for c.w. on a 700-watts final, and do not intend to put in one, at least not during this year.

(C.W., on any band, can usually be copied 100% when a phone signal is hardly detectable, assuming equal signal strength and fading conditions and ability to read c.w. - Ed)

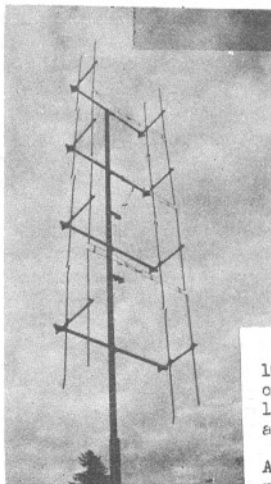
* * *

PLEASE ASK YOUR VHF FRIENDS TO SUBSCRIBE TO "THE VHF NEWS"! THANKS!

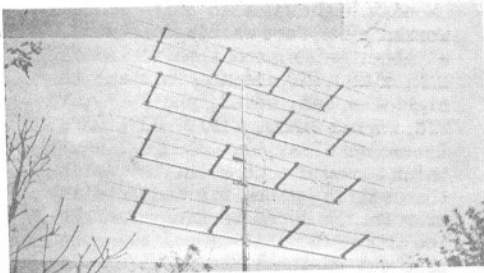
U. H. F. RESONATOR CO.

* * *

**Vertical and Horizontal 16 and 32 Element
TWO METER BEAMS for 1949**



16 Element Vertical



32 Element Horizontal

16 element two meter beams, power gain 40 over dipole, only ten lbs., only \$35; 32 el. beams, power gain up to 127 over dipole, only \$60. $\frac{1}{4}$ wave shorted transformer allows use of any line from 50 to 600 ohms.

Above are delivered prices, shipped Railway Exp., pre-paid, in shipping tubes. Please state polarization desired.

Also, 3, 4, 5 and 8 el. ten meter beams, wide spaced, and wide-spaced 20 meter beams. Also 8 to 32 el FM and TV beams. Send for folders on same.

U. H. F. RESONATOR CO.

Manufacturer of

Pre-tuned, Pre-spaced, and Pre-matched

High-forward-gain Beam Aerials for the Higher Frequencies

W. F. HOISINGTON, W2BAV
Formerly
Radar Officer, U. S. M. C. R.
Member of the Technical Staff
Bell Telephone Laboratories
Previous Calls IAJW, ILAS, BER

**GUION ROAD
RYE, NEW YORK**

TWO METERS FROM PORTER, INDIANA . .

From here, 3 days stand out in connection with 2 meter DX in July. The 10th was the big night, and we missed it; YL-ing. We were in on the night of the 12th, however, and worked W8WJC, whose signals were a terrific S9 plus! Many other signals were extremely strong from Michigan and out east. On July 23, the band was wide open around Lake Michigan. Wisconsin and upper Michigan signals sounded like locals, and the VEs nearly so. W9NHA entertained the "old timers" radio club at his summer cottage at Monticello, Ind., on July 23, 24 and 25th. VHF men present were HDB, SUT, CAW and NHA. Fishing, swimming, hamming and consumption of "flowers" were enjoyed by all. The YL lives at Monticello, so I had an extra special good time!

On Sunday, July 25, the northern Indiana gang was well-represented at the Winamac Ham Picnic by RHL, NHA, HKQ and CAW. We were pleased to meet EWO, Norm, as well as other vhf boys from down-state.

The greatest day of all, for me, was July 31! I congratulate the organizers of the Midwest VHF Club Picnic for a job well done! The YL and myself were tickled pink to meet, in person, the grand bunch of fellas I've been QSO-ing, the past years. Gosh, if we could get that gang on 2 all at once, we'd really have some QRM! It was a buck well spent; only one gripe, the YL and I didn't like the fire-water that was served, but plenty of others did.

Our local gang has been slipping, lately. EBO, DLIRHL and HKQ have been doing lots of listening, but - what I want to know is - how the heck are we going to know you're there, listening, if you don't give a yell?! CAW is working on a 16-element beam, and is thinking of throwing an antenna-raising party, with beer and sandwiches, to get it up. NHA promises to be back, soon. Remember: don't just listen, but give a couple of CQ's!

SUBSCRIPTIONS WANTED! . . .

Please ask your v.h.f. friends to subscribe to "The VHF News". Send complete QTH for sample copies.

W1MNF REPORTS FROM EAST ORLEANS, MASS.

Our contact with W8UKS was one of those pleasant surprises that happens on 2 meters when least expected!

Contacts, that evening, had been on vertical with Boston stations. After signing with W1IO, I was about ready to modulate the pillow when the unusual happened! I heard W1BCN calling W8UKS, so I turned the beam to the west, went on horizontal, and called CQ. W1BCN came back and said that W8UKS was calling me; careful listening brought no results from W8UKS, but I heard W8WJC signing with W1HDQ, good old Ed, in Canton. Then, I called W8WJC, but no results inasmuch as QSB prevailed. Being an over-anxious "Joe", I called another CQ. At 12:14, EDT, W8UKS called me and his signal peaked to Q5, S8. We had a QSO of about 4 minutes duration, ending at 12:18 because of QSB.

Tuning the band for more W8's, we heard W1PIV and W3KBA, Dover, Pa., in contact. When they cleared, W3KBA was called and worked. Art informed me that 2-meters had really been in "hot" condition, all night. W0 and W9 had been doing themselves justice up his way, and he passed along information on calls and frequencies.

We sure hope to work W0MNO, W0ZJB, W0NFM, W0JTI and all the other nice DX that is active!

* * *

W4BCT REPORTS FROM RELIANCE, VA. .

Now have 7 states, D.C., and three call areas. Best DX, 250 miles. (Ed. Note: Believe this was before Ray worked W9UCH, recently.)

W4BCT is located in the Shenandoah Valley, about 70 miles west of Washington, D.C., at an elevation of 683 feet, but signals must cross mountains all around. Am using an 8-element horizontal, 55 ft. high. The final is a 3E29 with 100 watts input. The receiver is a 6J4 into a 522 into an SK25.

It should be possible to work N.C., Delaware and Kentucky from here, but have had no contacts, yet. Potential states are Indiana, Massachusetts, S. Carolina, Tennessee and Canada.

Will appreciate schedules with any stations in those states. - 73, Ray.

Quad ELECTRICAL SUPPLY, INC.

AMATEUR AND AIRCRAFT RADIO EQUIPMENT—X-RAY—MEDICAL, INDUSTRIAL AND SHOE FITTER SERVICE

TELEPHONE HOURS—9 AM to 5:30 PM DAILY, 1650 N. DAMEN AVE.
 A RMITAGE 6-8809 Saturday 9 AM to 1 PM CHICAGO 47, ILL.

AFTER THIS—THERE "AIN'T NOMORE" AT THESE PRICES

IMPORTANT NOTICE. This sale ends September 5, 1949. No orders, received here, after that date, at these prices, will be accepted. **ORDER EARLY.**

PM-5 Series Jensen 5" FM Speakers
 FM-5G, DS, LS, etc. Heavy alnico slug. 18 watt normal 25 watt peak. Use as driver, tweeter, speaker, etc.
BRAND NEW each \$2.50



10" Jensen Electro-Magnetic Speakers. 1500 ohm, 82 MA DC field coil; 8 ohm, 10 watt normal voice coil.
BRAND NEW each \$3.50



12" Jensen Electro-Magnetic Speakers. 4500 ohm, 32 MA DC field coil; 8 ohm, 15 watt normal voice coil.
BRAND NEW each \$4.00



Desk Type Telephones. Old fashioned phones, with carbon mouthpiece, magnetic receiver and hook. In excellent, operable condition. **USED, perfect pair \$3.00**



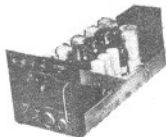
Dynamotor. 18v DC input; 450v 80 MA continuous, 375v 100 MA intermittent, DC, output.
BRAND NEW each \$2.75



Miniature Super-hot Tuning Condensers. Cut plate, 360 and 140 MMFD. Only 1 1/2" X 1 1/2" X 1 3/8". Made by PHILCO
BRAND NEW each 59¢



AN/APN-4, Loran Receiver—Power Supply. 16 KC to 2 MC, has 1050 KC IF, 4E to 60 KC band width, receiver. Power supply is 400 cycle. 14 tubes, condensers, transformers, blower motor, etc
USED, excellent \$8.00



BC-212, Interphone Amplifier. Has two 605 tubes, input and output transformers, etc. Schematic included. 5" X 5 1/2" X 2". A BARGAIN.
BRAND NEW each \$3.00

BC-606D, Interphone Control Box. Has SPST toggle switch; 50,000 ohm potentiometer; terminal board and jacks. All in green metal box 4" X 4" X 2". **BRAND NEW 75¢**

BC-461, Reel Control Box. Has 3 figure veedor root counter with reset control; 3 position switch pilot light, etc. Metal box 5" X 3 1/2" X 1 3/4".
BRAND NEW each 75¢



BC-746, Tuning Units for Walkie-Talkie. Has 2 crystals; 140 MMFD APC; coils, etc. See Jan. 1948 QST for details for 80 meter 1 watt transmitter.
BRAND NEW each 79¢



Step Down Transformer. UTC R-42 220v 60 cycle primary. 110v secondary. 80 watt. Includes line cord and plug, and receptacle.
BRAND NEW each \$3.00



50 MMFD, 5000v DC Vacuum Condensers. WE. **USED, \$1.50**



8 MFD 450v DC Sprague Electrolytic condensers. Square metal cased. **NEW 35¢**



2500 MFD 3v DC Galvin Electrolytic condensers. Round metal cased. **NEW 20¢**



MAGNETRON TUBES **BRAND NEW**
 2J32 \$15.00 2J36 \$25.00

TERMS: All prices quoted are NET, FOB our warehouse, Chicago. All items are subject to prior sale. 20% minimum deposit with order, balance COD. Illinois orders add 2% to cover sales tax. Write for FREE CIRCULAR.

THE VHF NEWS

Bill McNatt, W9NFK
2433 ELDER LANE
FRANKLIN PARK, ILL.

Sec. 562, P.L. & R.

U.S. POSTAGE

PAID

Franklin Park, Ill.

Permit No. 25

POSTMASTER: If addressee has moved, notify sender on Form 3547, postage for which is guaranteed.